



# SW900V

## Smartwash Pass-through Warewasher



The Smartwash Range is Australia's premier pass-through warewashers. These sleek, intelligent systems redefine dishwashing with one-touch control panels, digital temperature displays for HACCP compliance, and outstanding sustainability in water and energy usage. Compact and stylish, they prioritize space and aesthetics. Certified for ventless installation (SEED), their innovative heat recovery system recycles steam energy, conserving power with every cycle. Experience advanced warewashing that's efficient, certified, and environmentally conscious.

## SW900V standard features and benefits

- Water saving - uses only 1.8 litres per cycle
- User friendly ONE TOUCH control panel with digital wash and rinse temperature displays for easy HACCP recording
- Four wash cycles of 60, 90 & 180 seconds + special (time variable wash cycle chosen by operator - time limit 12 min)
- Built-in detergent and rinse aid pump fitted as standard
- Huge 465 mm opening for large items e.g. Pots
- Insulated eco hood for energy saving and noise reduction saves up to 0.5 kW per hour
- Independently certified for ventless/hoodless installation (SEED)
- Self cleaning cycle

### Standard accessories

- 1 x plate rack
- 1 x cup rack
- 1 x cutlery container

Please note: Heat recovery unit is supplied separately and will require assembly prior to use.



60 sec



90 sec



180 sec



+ 1 special



Please note, due to ongoing product development and improvement, we reserve the right to change product design and specification at any time without notice.



1800 013 123 | +61 2 9604 7333  
sales@middleby.com.au  
middleby.com.au

VIC - TAS - 47 Stubbs Street, Kensington VIC 3031  
QLD - U12, 210 Queensport Rd Nth, Murarrie QLD 4172  
WA - U2, 9 Meares Way, Canning Vale WA 6155, 08 9456 0559

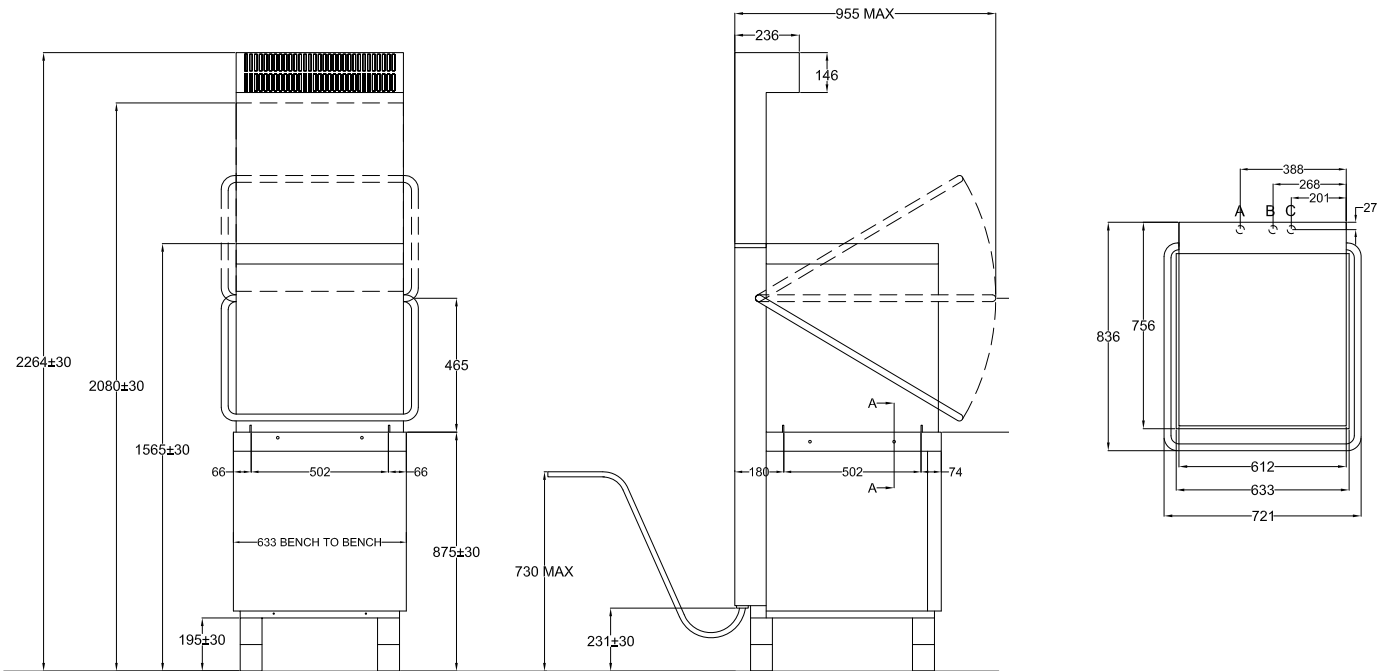
HEAD OFFICE  
AND MANUFACTURING PLANT  
211-217 Woodpark Road, Smithfield NSW 2164

v1\_2024



# SW900V Smartwash Pass-through Warewasher

- A. Drain Connection  $\varnothing$ 32mm Drain Tube
- B. Water Connection 3/4" SS Flexible Tube
- C. Electrical Connection 415V/3ph+N+E



## SW900V SPECIFICATIONS



PE-388-GE-09

<b>DISHWASHER DIMENSIONS (WxDxH)</b>	633 x 755 x 1565 mm
<b>HEAT RECOVERY UNIT DIMENSIONS (WxDxH)</b>	633 x 755 x 700 mm
<b>HOOD OPENING</b>	465 mm
<b>HOOD CONSTRUCTION</b>	Double-skinned
<b>HOOD LIFT SYSTEM</b>	ProGlide (3 kg)
<b>HOOD LIFT HANDLE</b>	All-around
<b>WASH CHAMBER</b>	TotalClean - Pipe Free
<b>RACK SIZE (WxD)</b>	500 x 500 mm
<b>RACK STAND CONSTRUCTION</b>	S/S wire hinged
<b>RATING</b>	10.2 kW / 16 A
<b>MEAL SERVICE</b>	40-80 pax
<b>WASH CYCLE</b>	60, 90, 180 sec + special
<b>SELF CLEANING CYCLE</b>	YES
<b>WASH PUMP TYPE</b>	Double flow

<b>WASH PUMP POWER</b>	700 W
<b>DETERGENT &amp; RINSE AID PUMP</b>	Fitted
<b>RINSE SYSTEM</b>	SmartRinse
<b>RINSE BOOSTER PUMP</b>	Fitted
<b>SELF DIAGNOSTIC SYSTEM</b>	Fitted
<b>BOILER HEATING ELEMENT</b>	7 kW
<b>DRAIN PUMP</b>	Fitted
<b>DRAIN SYSTEM</b>	SmartDrain (deep drain)
<b>DOSING SYSTEM</b>	ProDose electr. Controlled
<b>WATER CONSUMPTION</b>	1.8 lt/rack
<b>TANK CAPACITY</b>	22 litres
<b>TANK CONSTRUCTION</b>	Deep drawn
<b>TANK HEATING ELEMENT</b>	2.5 kW
<b>WEIGHT</b>	150 kg
<b>PACKED</b>	1.332 m <sup>3</sup>

Please note, due to ongoing product development and improvement, we reserve the right to change product design and specification at any time without notice.



1800 013 123 | +61 2 9604 7333  
 sales@middleby.com.au  
 middleby.com.au

**VIC - TAS** - 47 Stubbs Street, Kensington VIC 3031  
**QLD** - U12, 210 Queensport Rd Nth, Murarrie QLD 4172  
**WA** - U2, 9 Meares Way, Canning Vale WA 6155, 08 9456 0559

**HEAD OFFICE AND MANUFACTURING PLANT**  
 211-217 Woodpark Road, Smithfield NSW 2164

v1\_2024